

Teledyne BlueView

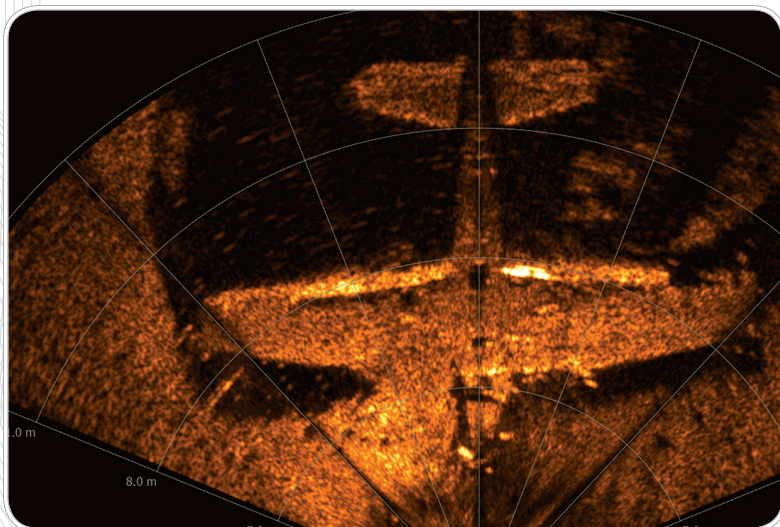
# M900 Series

## 2D Imaging Sonar

The most compact, full featured 2D Multibeam Imaging Sonar available. The M Series fits where other multibeam imaging sensors can't, delivering crisp, real-time streaming sonar imagery.

The M Series is:

- Lightest in class: 0.86 lbs. in water
- Widest field-of-view in class: 130°
- Lowest power in class: < 20 watts
- Capture sonar, video, and position data in software package



*Sunken WWII Grumman  
F6F Hellcat Fighter Aircraft.*

## PRODUCT FEATURES AND APPLICATIONS

All M Series sonar operate while in motion or from a stationary position delivering real-time imagery and data.

### FEATURES

- Real-time video like imagery
- Motion immune imagery
- Record raw acoustic data for enhanced controls during playback
- Point to point measurements
- Multiple comm port setup for positioning instrumentation integration
- Automatic and manual acoustic source level control

### APPLICATIONS

- ROV navigation
- Object detection
- Target tracking
- Obstacle avoidance
- Operations monitoring
- Equipment/tool placement
- Search and recovery
- Area survey

# M900 Series

## 2D Imaging Sonar



### TECHNICAL SPECIFICATIONS

		M900-90	M900-130
<b>Sonar</b>	Field-of View	90°	130°
	Max Range	100 m (328 ft)	100 m (328 ft)
	Optimum Range	2-60 m (6.6-197 ft)	2-60 m (6.6-197 ft)
	Beam Width	1 x 20°	1 x 20°
	Beam Spacing	0.18°	0.18°
	No. of Beams (90, 130 FOV)	512	768
	Range Resolution	1.3 cm (0.54 in)	1.3 cm (0.54 in)
	Update Rate* within Optimum Range	Up to 25 Hz	Up to 25 Hz
<b>Interface</b>	Operating Frequency	900k Hz	900 kHz
	Supply Voltage	12-48 VDC	12-48 VDC
	Max Power Consumption**	20 W	20 W
<b>Mechanical</b>	Connectivity	Ethernet	Ethernet
	Weight in Air (std/deep)	4 lbs / 10.54 lbs	4 lbs / 10.54 lbs
	Weight in water (std/deep)	0.86 lbs / 5.09 lbs	0.86 lbs / 5.09 lb
	Depth rating (std/deep)	1000 m (3280 ft) / 4000 m (13120 ft)	1000 m (3280 ft) / 4000 m (13120 ft)
	Dimensions*** (L x W x H) (std/deep)	7.56 in x 4.0 in x 4.0 in (4.0 inch can) / 10.2 in x 5.0 in x 5.0 in (5.0 inch can)	7.56 in x 4.0 in x 4.0 in (4.0 inch can) / 10.2 in x 5.0 in x 5.0 in (5.0 inch can)

\* Range-dependent

\*\* Non-VDSL unit at 24 VDC

\*\*\* Length does not include connector length



The Teledyne BlueView M900-130 Sonar accessories and case.