



# STARFISH

## Side scan sonar



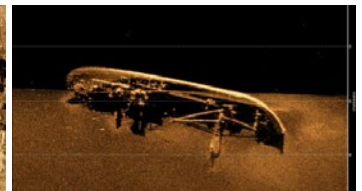
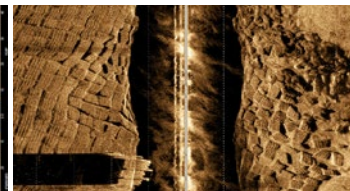
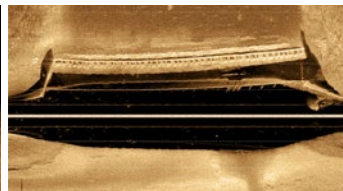
**The StarFish** is a side scan sonar system that provides high quality imagery of the seafloor. With its unique and innovative design, the StarFish is the smallest towable side scan sonar on the market.

It has been specially developed for use in shallow waters up to 50 meters. It is suitable for use in harbors, coastal areas and inland waters (rivers, canals, lakes, etc.) for pre-work inspection missions and searches for wrecks, objects (underwater archaeology) or bodies (civil security, police).

The StarFish is ultra-portable and comes in a Peli Case to facilitate moving it between boats. It performs especially well in remote and shallow water areas where other side-scanning systems struggle to achieve similar performance.

### APPLICATIONS

- Wreckage and debris detection
- Harbour security
- Search for bodies
- Flood investigations
- Scientific research
- Archaeological inspections and studies
- Underwater civil engineering works



## SYSTEMS

**STARFISH 990F**



**STARFISH 452F**



**STARFISH 992H**



**STARFISH 454 OEM**



**STARFISH 990 OEM**



TECHNICAL SPECIFICATIONS		STARFISH 990F	STARFISH 452F	STARFISH 992H	STARFISH 454 OEM	STARFISH 992 OEM
SONAR	Frequency	450kHz CHIRP	1MHz CHIRP	1MHz	450kHz CHIRP	1MHz CHIRP
	Range	Up to 100m per channel	Up to 35m per channel	Up to 100m per channel	Up to 100m per channel	Up to 35m per channel
	Horizontal beam width	0.8°	0.3°	0.3°	0.5°	0.3°
	Vertical scan angle	60°				
	Transducer angle	Tilted Down 30° from Horizontal			Variable (OEM Specified)	
	LxWxH	378mm x 97mm x 110mm		240mm x 95mm x 25mm	390mm x 22.5mm x 40mm	282mm x 22.5mm x 30mm
	Weight in air	2.0kg		0.7kg	0.8kg	0.7kg
	Material	Polyurethane Rubber		Polyurethane Rubber (Acetal Housing)	Polyurethane Rubber (PA6 Housing)	
	Color	Yellow	Red	Black		
	Depth	50m			2000m	
	Connector	Impulse, 5-way (MCIL-5-FS)		N/A	SMB Female Plug	
	Softwares	StarFish Scanline, Hypack 2009, SonarWiz.MAP/ SonarWiz 5 (Chesapeake Technology), Qeuster Tangent SWATHVIEW system and CleanSweep-Lite (Oceanic Imaging Consultants, Inc.). Windows SDK available for OEM integrators.				
	SURFACE BOX	Power supply	90-264VAC, 47-63Hz or 9-28VDC			
Power consumption		6W (500mA @ 12VDC)				
Power interface		2.1mm DC jack socket		2.1mm DC jack socket/ 6-Way Pin Header		
Sonar interface		6-Way Souriau "UTS" female socket		SMB Male Jack		
LxWxH		166mm x 106mm x 34mm			166mm	
Weight in air		0.4kg				
Temperature		-5°C to +40°C				
CABLE	IP	IP50 (Protection against ingress of dust, no protection against liquids)			IP50 (if Top-Box selected)/None	
	Length	20m or 50m		20m	600mm	
	Material	Black polyurethane jacket with internal Kevlar reinforcing (strain) member			Coaxial Interference Shielded Cable	
Connector	Impulse, 5-way (MCIL-5-FS)		SMB Female Plug			



[www.subsea-tech.com](http://www.subsea-tech.com)



+33 (0) 491 517 671



SubseaTech\_



[st.sales@subsea-tech.com](mailto:st.sales@subsea-tech.com)



SubseaTech



subsea-tech