

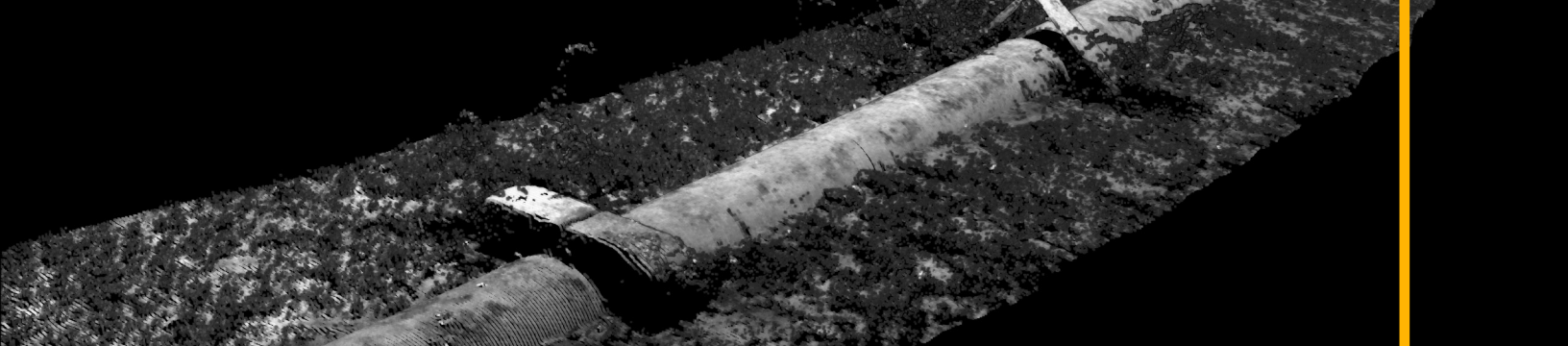


STATIC & DYNAMIC LASER SCANNERS

# Insight Micro

The Insight Micro enables small vehicle platforms to perform high accuracy inspection tasks with tightly integrated laser and stills data. The package provides long range data collection (7m) in a compact and low power draw package.

The system has been integrated with AUVs like the REMUS 600, and ROVs like the Saab Falcon, utilizing its software API and time synchronization to enable rapid adoption onto existing vehicle assets. Laser and Image data is processed and enhanced in real-time onboard the system to deliver actionable data for machine learning applications.



## At A Glance

An overview of the main benefits of using an Insight Micro for your project.

- 🕒 High-accuracy models from small vehicles
- 🔋 Compact & low power draw
- 📷 Seamless stills imaging integration
- 💾 Onboard storage & data enhancement

## Specifications Integration drawings available - [contact sales](#)

Feature	Insight Micro
Scan Range	1.2m - 7m
Points Per Line	2464
Angle of View	50°
X Resolution <small>(Along laser line)</small>	1.1mm @ 3m   1.9mm @ 5m   2.6mm @ 7m   3.8mm @ 10m
Y Resolution <small>(Profile to profile)</small>	3.5mm @ 0.5knot   14.2mm @ 2knot   28.5mm @ 4knot
Z Resolution <small>(Depth Resolution)</small>	0.2mm @ 3m   0.5mm @ 5m   1.2mm @ 7m   1.9mm @ 10m
Profile Rate	89Hz with range limiting
Laser	700mW, Class 3B, 450nm
Power Consumption	37W, 24-60 VDC
Data Interface	Ethernet, TCP/IP Communication
Weight	3kg (water), 8.5kg (air)
Depth Rating	1000m
Data Storage	Onboard 2TB solid state drive or Network storage
Data Acquisition	ViewLS   C++ API Included
Calibration	Factory Calibrated
Export Data Formats	.XYZ (CSV), LAS Publishing
3rd Party Integration	QPS QINSy, EIVA NaviSuite, HYPACK HYSWEEP, 4D Nav

