

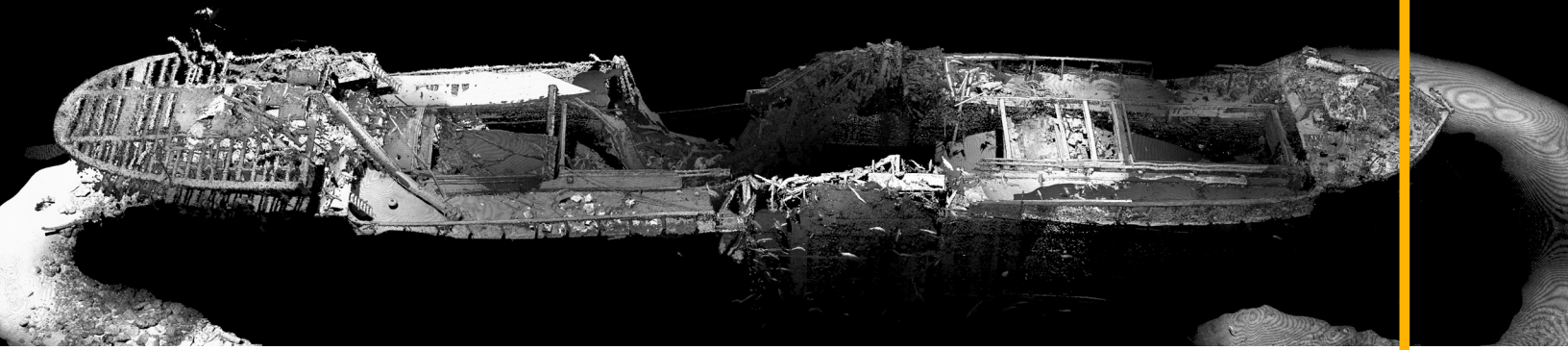


STATIC & DYNAMIC LASER SCANNERS

Insight Pro


The Insight Pro is a long range laser scanner designed for wide area 3D modelling from dynamic and static platforms. The proven design has been deployed since 2013, scanning over 10,000km of subsea pipeline, seabed, and subsea structures.


The Insight Pro has been integrated with countless AUVs and ROVs, simplifying integration with software API that enables autonomous control, and off-the-shelf support of standard vehicle navigation systems. The data is processed in real-time onboard the system to enable machine learning applications like defect detection and pipeline following.



At A Glance

An overview of the main benefits of using an Insight Pro for your project.

 High-speed & long-range data

 Simple integration

 Real-time actionable data

 Proven reliability on AUVs & ROVs since 2013

Specifications Integration drawings available - [contact sales](#)

Feature	Insight Pro
Scan Range	1.5m - 15m
Points Per Line	2048
Angle of View	50°
X Resolution (Along laser line)	1.3mm @ 3m 2.3mm @ 5m 4.5mm @ 10m 6.7mm @ 15m
Y Resolution (Profile to profile)	2.8mm @ 0.5knot 11.1mm @ 2knot 22.2mm @ 4knot
Z Resolution (Depth Resolution)	0.2mm @ 3m 0.5mm @ 5m 1.9mm @ 7m 4.1mm @ 10m
Profile Rate	90Hz with range limiting
Laser	700mW, Class 3B, 450nm - temperature controlled
Power Consumption	60W, 24-60 VDC
Data Interface	Ethernet, TCP/IP Communication
Weight	13kg (water), 23.1kg (air)
Depth Rating	4000m or 6000m
Data Storage	Network storage
Data Acquisition	ViewLS C++ API Included
Calibration	Factory Calibrated
Export Data Formats	.XYZ (CSV), LAS Publishing
3rd Party Integration	QPS QINSy, EIVA NaviSuite, HYPACK HYSWEEP, 4D Nav

