



- ⚙ Detect from 50mm to 6m
- ⚙ Scan on 360°

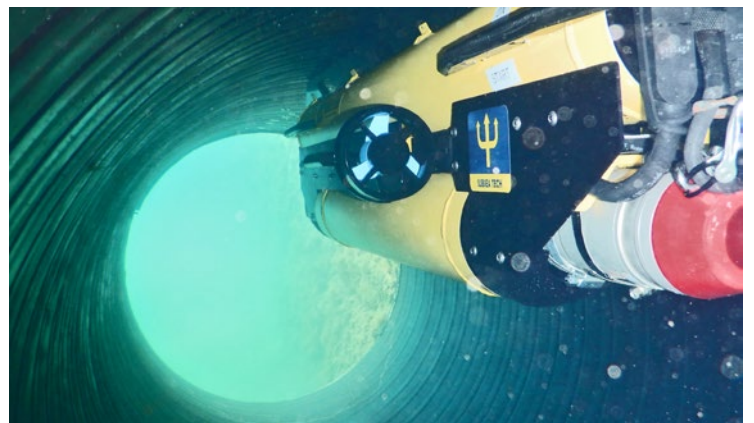
## IMAGENEX 831-A Pipe profiling sonar

The **Imagenex 831-A pipe profiling sonar** offers the possibility to measure with a high precision the inside diameter of pipes over long distances. This allows monitoring deformation, sedimentation level and other disorders affecting the pipes.

Data are time correlated with the run distance to allow 3D image conception in post-treatment.

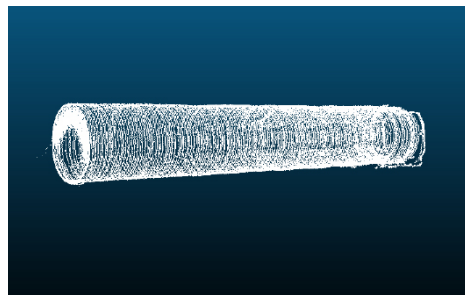
### *Applications*

- Profiling
- Pipeline inspection
- Scientific Research

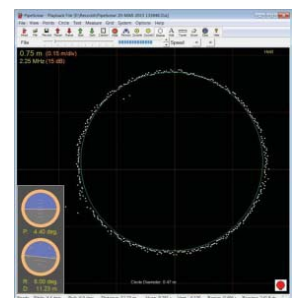


### *Compatible with*

- Guardian Mini-ROV
- Tortuga ROV
- Torpedo AUV
- Motorized skid



Pipe 3D modeling.



Pipeline internal modeling.

# TECHNICAL SPECIFICATIONS

## ACQUISITIONS

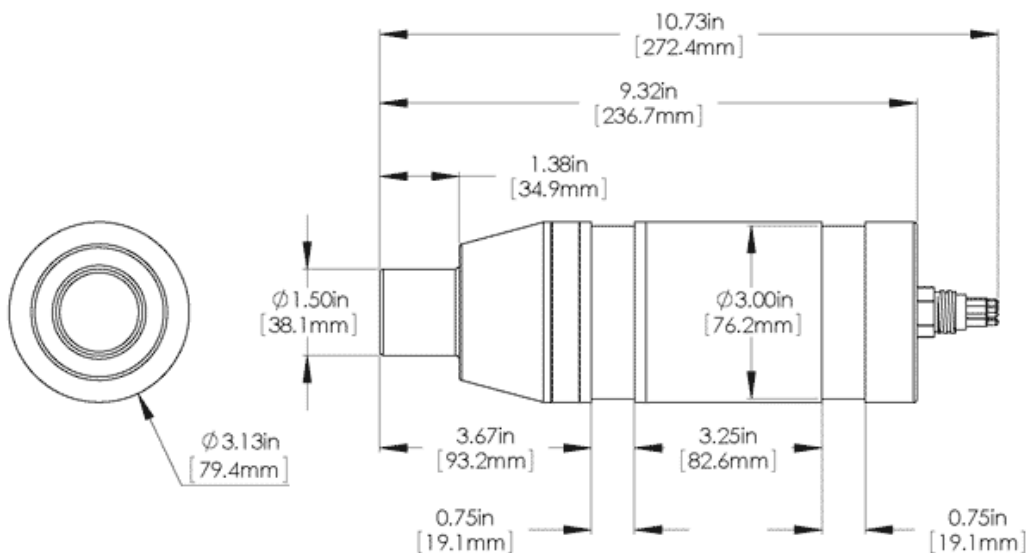
<b>Transducer beam width</b>	1.4° conical
<b>Max. range</b>	6 m
<b>Min. detectable range</b>	50 mm
<b>Range resolution</b>	1 mm à 0.25m (distance min)
<b>Step size</b>	0.9°
<b>Scan</b>	360° in 1 sec (up 1m range)
<b>Max. operating depth</b>	1000 m

## MECHANICAL/ELECTRIC

<b>Power supply</b>	20 - 36 VDC at less than 5 Watts
<b>Frequency</b>	2.25MHz
<b>Dimensions</b>	Ø79,4 x 273 mm
<b>Weight</b>	1,4 kg in air et 0,5 kg in water
<b>Material</b>	6061-T6 Aluminum & Polyurethane

## OUTPUT


**Interface** RS-485 serie @ 115,2 kbps (RS-232 option)



[WWW.SUBSEA-TECH.COM](http://WWW.SUBSEA-TECH.COM)

✉ [st.sales@subsea-tech.com](mailto:st.sales@subsea-tech.com)

☎ +33 (0) 491 517 671

 subsea-tech